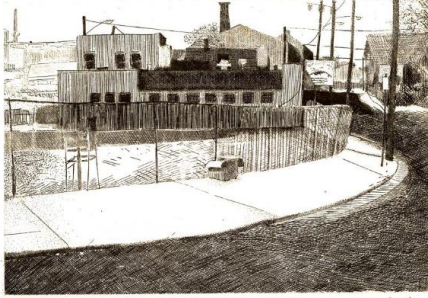


# Basic Detail Report

---



## Untitled

### Date

c. 1981

### Primary Maker

Elizabeth Peak

### Medium

Etching

### Description

Elizabeth Peak (American, born 1952) is a contemporary African-American printmaker who earned her MFA from the Yale School of Art in 1977. Peak executes copper etchings in a traditional

manner, often of urban and industrial landscapes. This small etching was created around 1981 and is typical of her prints of the time.

### Dimensions

Plate: 5 1/2 x 8 in. (14 x 20.3 cm) Sheet: 13 5/8 x 14 11/16 in. (34.6 x 37.3 cm)